



Combine beauty and convenience to HT automated cellular shades

Automated shades are perfect solution for hard to reach windows above a bathtub, behind furniture or in a two story foyer. At the simple press of a button, a hand held remote will raise and lower the shade to a favorable position.

System Features

- Radio Technology Somfy (RTS)
- Reloadable battery for easy maintenance
- Allow you to set up upper and lower limit for the shade
- Motor hidden inside headrail with battery wand wall mounted or attached to back of headrail
- Install with HT heavy duty brackets



770 South Epperson Drive
city of Industry, CA 91748
Phone #: 626-8398866
www.htwfonline.com



MOTORIZED CUSTOM CELLULAR SHADE SPECIFICATION

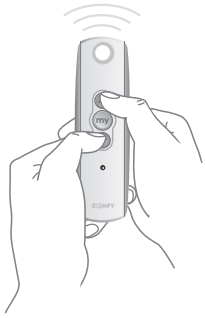
- Manufacturer:** HT Window Fashions™, City of Industry, California USA
- Fabric:** Cellular shade is made of spun lace, non-woven fabric. 100% polyester. Fabrics are available in single cell light filtering, double cell light filtering, and single cell room darkening.
- Head Rail:** Cellular shade head rail is made of aluminum. Head rail dimension is 1-1/2" high by 1-3/4" deep. Total depth with installation bracket is 1-7/8". Head rail end caps are made of PVC.
- Bottom Rail:** Standard bottom rail is made of aluminum. Bottom rail dimension is 1/2" high by 1-5/8" deep. Bottom rail end caps are made of PVC.
- Motor:** Somfy® CT-32 CordLift WireFree motor. Radio Technology Somfy (RTS) control. 12V DC. Maximum lift weight is 13 lbs.
- Power:** Reloadable battery tube & wands with 10" removeable cable. 8 AA lithium battery. Battery life is approximately 1-1/2 year, depending on usage. Replacement battery can be ordered through HT dealer.
- Remote:** Hand held transmitter with option of 1 channel or 5 channels. White casing.
- Valance:** Cold rolled spring tempered virgin aluminum slat. To have normal width of 1" and be 0.006" thickness after paint. Valance to be finished with a polyester baked enamel. Color coordinated to match the fabric.
- Installation Bracket:** Constructed of cold rolled steel. Zinc plated. Hex head screws are included.
- Fire Safety:** Regular cellular shade fabric is not fire retardant. Fire retardant fabric is available upon request.

For detailed information, please contact HT custom service.

770 South Epperson Drive, City of Industry, CA 91748
Phone: (626) 839-8866 (800) 879-9512
Fax: (626) 839-8861

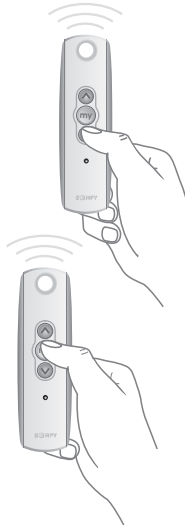
CordLift WireFree™ Visual Reference Guide

CT32-RT-12: Pleated and Cellular Shades



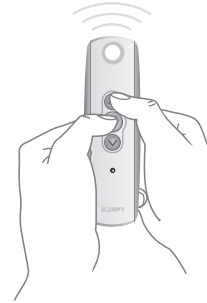
STEP 1

To initiate programming press and hold both the **▲ (Up)** and **▼ (Down)** buttons at the same time until the shade jogs.



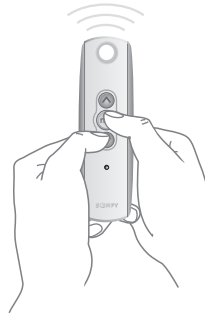
STEP 2

Check the direction of operation. Press and hold the **▼** button and confirm the shade moves in a down direction (shade will operate only when button is held). To change the direction press and hold the **my (Stop)** button until the shade jogs.



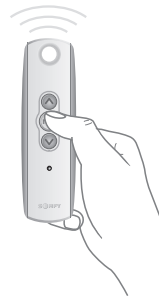
STEP 3

Bring the shade to your desired lower limit. Press and hold both the **my** and **▲** buttons until the shade begins to move up, then release. Stop the shade where the upper limit should be set, you can adjust by pressing the **▲** or **▼** buttons.



STEP 4

Bring the shade to your desired upper limit. Press and hold both the **my** and **▼** buttons until the shade begins to move down, then release. Stop the shade where the lower limit should be set, you can adjust by pressing the **▲** or **▼** buttons.



STEP 5

Press and hold the **my** button until the shade jogs to confirm the limit setting.

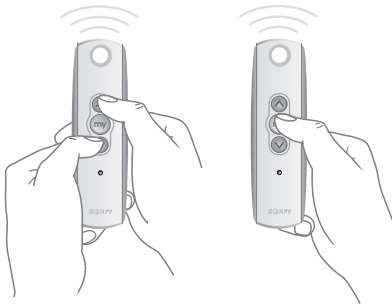


Programming Button

STEP 6

Press and hold the **Program** button on the back of the transmitter until the shade jogs. (Shade is now programmed and once operated will travel to its end limits.)

NOTE: Steps 3 and 4 may be reversed depending on initial position of shade.



TO ADJUST LIMITS

To change the lower limit: Move the shade to its current lower limit position and let it stop. Press the **▲** and **▼** buttons simultaneously until the shade jogs, then release. Adjust to a new lower limit position. Press the **my** button until the shade jogs, then release. Check new limit.

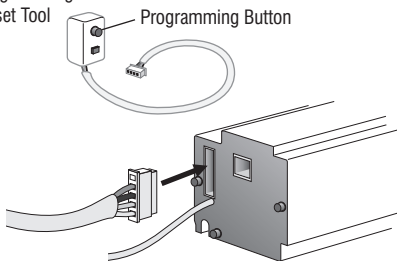
To change the upper limit: Move the shade to its current upper limit position and let it stop. Press the **▲** and **▼** buttons simultaneously until the shade jogs, then release. Adjust to a new upper limit position. Press the **my** button until the shade jogs, then release. Check new limit.



TO ADD A REMOTE/CHANNEL

First press the programming button on the back of the already programmed remote until the shade jogs. Then press the programming button on the new remote or channel that you would like to add until the shade jogs. Check it.

Programming Reset Tool



TO RESET THE MOTOR

Insert reset tool into connector on motor. **To delete all transmitters**, press and hold the program button located on the reset tool for 7 seconds. Release the programming button after the LED starts flashing. The shade jogs one time. The transmitters are deleted but the limits remain in memory. **To delete all previous settings** press and hold the program button located on the reset tool (approximately 12 seconds) until LED blinks rapidly then extinguishes. Shade is now reset to factory mode and shade limits will need to be reset.

Please contact SOMFY for detailed installation instructions

somfy